

# Falling

Pipko Fanfare

## Intro

♩ = 66

DMaj9

C#m7

DMaj9

C#m7



## Verse 1

9 DMaj9



11 C#m7



13 DMaj9



15 C#m7



## Chorus 1

17 Bm7

F#m7

E5

A5



21 Bm7

F#m7

E5

A5



**2 Verse 2**

25 DMaj9  
Dark-ness is clo - sing in - a - round me I'm trapped and a - lone and I just can't see

27 C#m7  
The hope of the sun and a brand new day My fears and my hang-ups get in my way

29 DMaj9  
Ev - ery day it's the same rou - tine I put on my mask so my pain's un - seen

31 C#m7  
I hide a-way from the world at large It's clear my anx-i - e - ty is in charge

**Chorus 2**

33 Bm7 F#m7 E5 A5  
I'm fall - ing through dark - ness I'm lost and a - lone be-neath it all

37 Bm7 F#m7 E5 A5  
I'm drown-ing in dark - ness There's no - bo - dy here to catch my fall

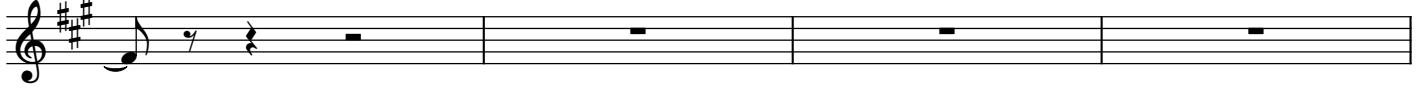
**Chorus 3**

41 B5 F#m7 E5 A5  
I'm fall - ing through dark - ness I'm lost and a - lone be-neath it all

45 B5 F#m7 E5 A5  
I'm drown-ing in dark - ness There's no - bo - dy here to catch my fall

**Bridge**

49 DMaj9



53 AMaj7 G#7(#9) C#m7 E(add9) AMaj7 G#7(#9) C#m7 E(add9)

**Chorus 4**

61 Bm7

F#m7

E5

A5



I'm fall - ing through dark - ness

I'm lost and a - lone be - neath it all

65 Bm7

F#m7

E5

A5



I'm drown - ing in dark - ness

There's no - bo - dy here to catch my fall

**Outro**

69 DMaj9

